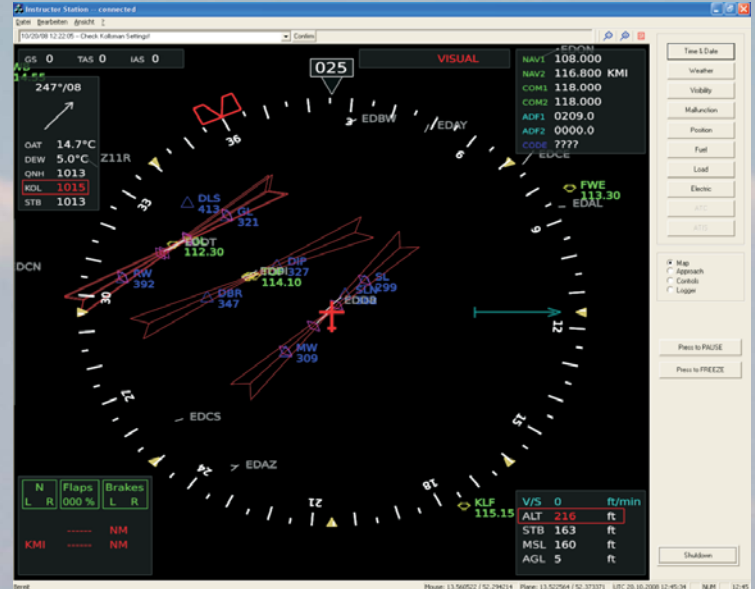




Specification of the FAME IFR-Trainer MEP-Basic:

- Cockpit environment with enclosure
- Outside view realized via beamer and screen
- Instruments are displayed on TFT-monitors / IFR-Panel with setting knobs
- Yoke, Pedals, Throttle
- Flaps lever and indicator
- Gear lever and indicator
- Sidepanel
- NAV-Rack
- Simulations PCs
- Instructor-Station
- Pilot Seat
- Simulation of a multi-engine piston airplane Cessna C421



Überreicht durch:

SPREE FLUG Luftfahrt GmbH

Eisenbahnstr. 12
15517 Fürstenwalde