

FAME Systems – IFR-Panel

Panelset Cessna 441 Conquest II Version 1.1



01.02.2010

© SPREE FLUG Luftfahrt GmbH

FAME SYSTEMS

Eisenbahnstr. 12

D-15517 Fürstenwalde

www.fame-systems.de

Inhaltsverzeichnis

Inhaltsverzeichnis.....	3
1. Beschreibung der Panelsets	5
1.1 Cessna 441 „Conquest II“	5
1.1.1 ADF 1.....	5
1.1.2 ADF2.....	5
1.1.3 Altimeter.....	6
1.1.4 Altimeter Standby (Copilot Side).....	6
1.1.5 Altimeter.....	7
1.1.6 Altimeter Standby (Copilot Side).....	7
1.1.7 Annunciator Left.....	8
1.1.8 Annunciator Right	8
1.1.9 Cabin Altitude	8
1.1.10 Cabin Rate	9
1.1.11 Clock	9
1.1.12 Directional Gyro DG (not slaved).....	10
1.1.13 EGT LEFT	10
1.1.14 EGT RIGHT	11
1.1.15 FUEL STATE LEFT.....	11
1.1.16 FUEL STATE RIGHT	12
1.1.17 FUELFLOW LEFT	12
1.1.18 FUELFLOW RIGHT.....	13
1.1.19 GEAR	14
1.1.20 HORIZON 1	14
1.1.21 HORIZON 2.....	15
1.1.22 HSI	15
1.1.23 TORQUE LEFT	16
1.1.24 TORQUE RIGHT.....	16
1.1.25 OAT	16
1.1.26 OIL LEFT	17
1.1.27 OIL RIGHT	17
1.1.28 OXYGEN	18
1.1.29 RADIOALT	18
1.1.30 RMI.....	19

1.1.31	RPM LEFT.....	19
1.1.32	RPM RIGHT	20
1.1.33	SPEED	20
1.1.34	SUCTION	21
1.1.35	TRIMTAB.....	21
1.1.36	TURN	22
1.1.37	TURN 1	23
1.1.38	VOR 1.....	23
1.1.39	VOR 2.....	24
1.1.40	VSI 1.....	24
1.1.41	Compass	25
1.1.42	FLAPS EXTEND INDICATOR.....	25

1. Beschreibung der Panelsets

1.1 Cessna 441 „Conquest II“

1.1.1 ADF 1



Name: ADF1

Beschreibung: ADF with dial heading

Def. Size X: 100 pixel

Def. Size Y: 100 pixel

Einstellbarkeit: ADF1-Frequenz
Dial Heading
Helligkeit

1.1.2 ADF2



Name: ADF2

Beschreibung: ADF with dial heading

Def. Size X: 100 pixel

Def. Size Y: 100 pixel

Einstellbarkeit: ADF2-Frequenz
Helligkeit

1.1.3 Altimeter



Name: ALTIMETER
 Beschreibung: ALTIMETER pilot side (InHg)
 Def. Size X: 100 pixel
 Def. Size Y: 100 pixel
 Einstellbarkeit: QNH
 Helligkeit

1.1.4 Altimeter Standby (Copilot Side)



Name: ALTIMETER_STBY
 Beschreibung: ALTIMETER copilot side (InHG) (STBY)
 Def. Size X: 100 pixel
 Def. Size Y: 100 pixel
 Einstellbarkeit: QNH
 Helligkeit

1.1.5 Altimeter



Name: ALTIMETER

Beschreibung: ALTIMETER pilot side (mb)

Def. Size X: 100 pixel

Def. Size Y: 100 pixel

Einstellbarkeit: QNH
Helligkeit

1.1.6 Altimeter Standby (Copilot Side)



Name: ALTIMETER_STBY

Beschreibung: ALTIMETER copilot side (mb)
(STBY)

Def. Size X: 100 pixel

Def. Size Y: 100 pixel

Einstellbarkeit: QNH
Helligkeit

1.1.7 Annunciator Left

Name: ANNUNCIATOR LEFT
Beschreibung: annunciator panel left side

Def. Size X: 100 pixel

Def. Size Y: 200 pixel

Einstellbarkeit: Helligkeit

1.1.8 Annunciator Right

Name: ANNUNCIATOR RIGHT
Beschreibung: annunciator panel right side

Def. Size X: 100 pixel

Def. Size Y: 200 pixel

Einstellbarkeit: Helligkeit

1.1.9 Cabin Altitude



Name: CABINALTITUDE
Beschreibung: Cabin altitude & diff pressure

Def. Size X: 100 pixel

Def. Size Y: 100 pixel

Einstellbarkeit: Cabin Altitude
Helligkeit

1.1.10 Cabin Rate



Name: CABINRATE

Beschreibung: cabin pressure rate

Def. Size X: 100 pixel

Def. Size Y: 100 pixel

Einstellbarkeit: Helligkeit

1.1.11 Clock



Name: CLOCK

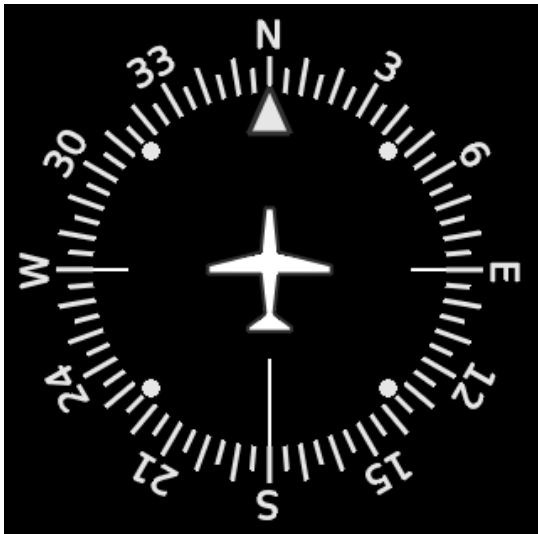
Beschreibung: a nice clock

Def. Size X: 100 pixel

Def. Size Y: 100 pixel

Einstellbarkeit: Simulationszeit
Stoppuhr
Helligkeit

1.1.12 Directional Gyro DG (not slaved)



Name: DG
 Beschreibung: directional gyro NOT slaved
 Def. Size X: 100 pixel
 Def. Size Y: 100 pixel
 Einstellbarkeit: Heading
 Helligkeit

1.1.13 EGT LEFT



Name: EGT LEFT
 Beschreibung: EGT left engine
 Def. Size X: 100 pixel
 Def. Size Y: 100 pixel
 Einstellbarkeit: Helligkeit

1.1.14 EGT RIGHT



Name: EGT RIGHT

Beschreibung: EGT right engine gauge

Def. Size X: 100 pixel

Def. Size Y: 100 pixel

Einstellbarkeit: Helligkeit

1.1.15 FUEL STATE LEFT



Name: FUEL STATE LEFT

Beschreibung: fuel state left gauge

Def. Size X: 100 pixel

Def. Size Y: 100 pixel

Einstellbarkeit: Helligkeit

1.1.16 FUEL STATE RIGHT



Name: FUEL STATE RIGHT

Beschreibung: fuel state right gauge

Def. Size X: 100 pixel

Def. Size Y: 100 pixel

Einstellbarkeit: Helligkeit

1.1.17 FUELFLOW LEFT



Name: FUELFLOW LEFT

Beschreibung: fuel flow left engine gauge

Def. Size X: 100 pixel

Def. Size Y: 100 pixel

Einstellbarkeit: Helligkeit

1.1.18 FUELFLOW RIGHT



Name: FUELFLOW RIGHT

Beschreibung: fuel flow right engine gauge

Def. Size X: 100 pixel

Def. Size Y: 100 pixel

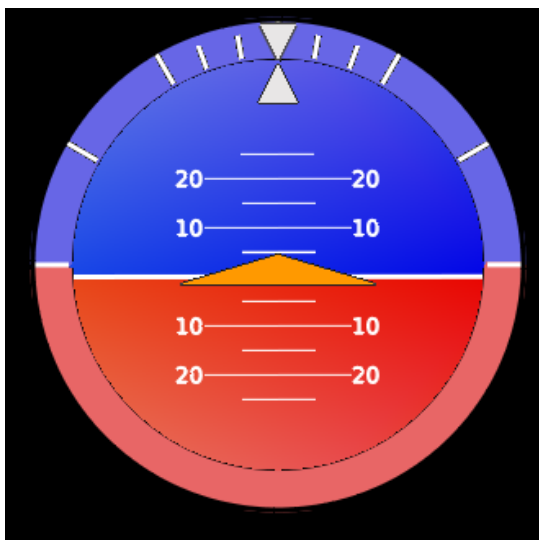
Einstellbarkeit: Helligkeit

1.1.19 GEAR



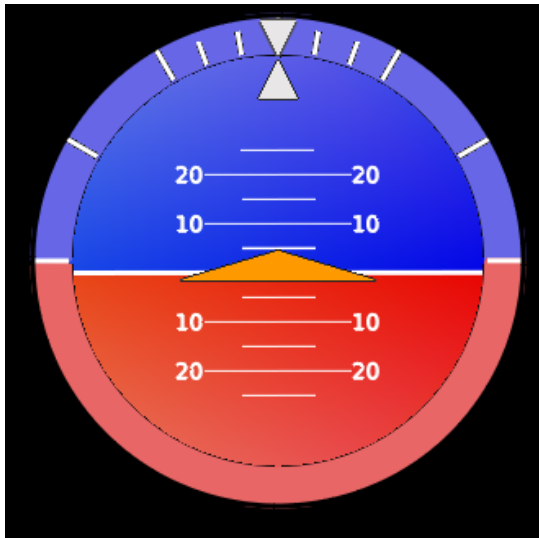
Name: GEAR
 Beschreibung: gear lights
 Def. Size X: 100 pixel
 Def. Size Y: 100 pixel
 Einstellbarkeit: Helligkeit

1.1.20 HORIZON 1



Name: HORIZON1
 Beschreibung: horizon with flight director
 Def. Size X: 100 pixel
 Def. Size Y: 100 pixel
 Einstellbarkeit: Attitude-Indicator
 Flight Director (FD)
 Helligkeit

1.1.21 HORIZON 2



Name: HORIZON2
 Beschreibung: horizon without flight director
 Def. Size X: 100 pixel
 Def. Size Y: 100 pixel
 Einstellbarkeit: Attitude-Indicator
 Helligkeit

1.1.22 HSI



Name: HSI
 Beschreibung: standard HSI
 Def. Size X: 100 pixel
 Def. Size Y: 100 pixel
 Einstellbarkeit: Heading
 OBS
 Helligkeit
 Flags: Heading
 NAV
 GS

1.1.23 TORQUE LEFT



Name: TORQUE LEFT
 Beschreibung: torque left engine gauge

Def. Size X: 100 pixel
 Def. Size Y: 100 pixel

Einstellbarkeit: Helligkeit

1.1.24 TORQUE RIGHT

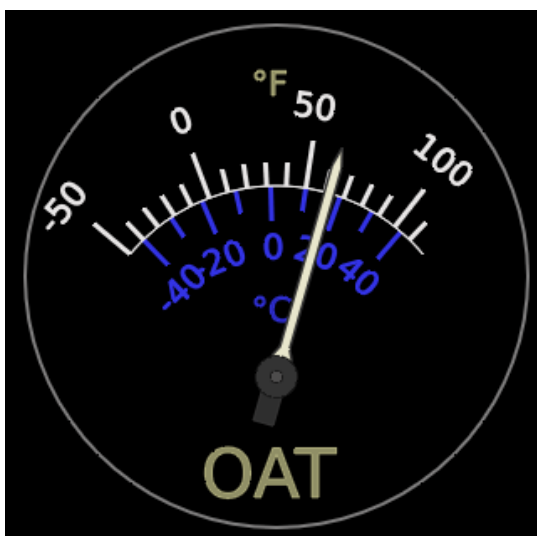


Name: TORQUE RIGHT
 Beschreibung: torque right engine gauge

Def. Size X: 100 pixel
 Def. Size Y: 100 pixel

Einstellbarkeit: Helligkeit

1.1.25 OAT



Name: OAT
 Beschreibung: outside air temperature

Def. Size X: 100 pixel
 Def. Size Y: 100 pixel

Einstellbarkeit: Helligkeit

1.1.26 OIL LEFT



Name: OIL LEFT

Beschreibung: oil temperature & oil pressure gauge left engine

Def. Size X: 100 pixel

Def. Size Y: 100 pixel

Einstellbarkeit: Helligkeit

1.1.27 OIL RIGHT



Name: OIL RIGHT

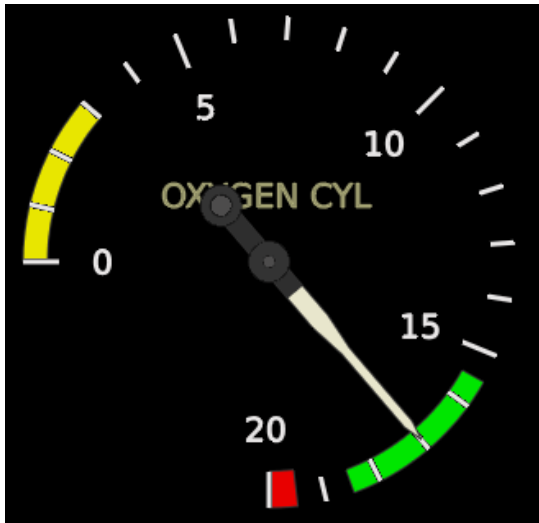
Beschreibung: oil temperature & oil pressure gauge right engine

Def. Size X: 100 pixel

Def. Size Y: 100 pixel

Einstellbarkeit: Helligkeit

1.1.28 OXYGEN



Name: OXYGEN
 Beschreibung: oxygen cylinder pressure
 Def. Size X: 100 pixel
 Def. Size Y: 100 pixel
 Einstellbarkeit: Helligkeit

1.1.29 RADIOALT



Name: RADIOALT
 Beschreibung: radio altimeter with decision altitude
 Def. Size X: 100 pixel
 Def. Size Y: 100 pixel
 Einstellbarkeit: DA
 Helligkeit
 Flags: InOP
 DA

1.1.30 RMI



Name: RMI
 Beschreibung: RMI gauge
 Def. Size X: 100 pixel
 Def. Size Y: 100 pixel
 Einstellbarkeit: ADF Frequenz
 VOR Frequenz
 Helligkeit

1.1.31 RPM LEFT



Name: RPM LEFT
 Beschreibung: RPM left engine gauge
 Def. Size X: 100 pixel
 Def. Size Y: 100 pixel
 Einstellbarkeit: Helligkeit

1.1.32 RPM RIGHT



Name: RPM RIGHT
 Beschreibung: RPM right engine gauge

Def. Size X: 100 pixel
 Def. Size Y: 100 pixel

Einstellbarkeit: Helligkeit

1.1.33 SPEED

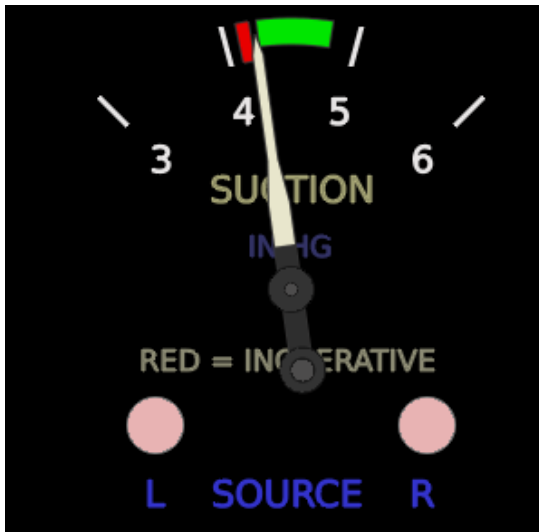


Name: SPEED
 Beschreibung: indicated airspeed

Def. Size X: 100 pixel
 Def. Size Y: 100 pixel

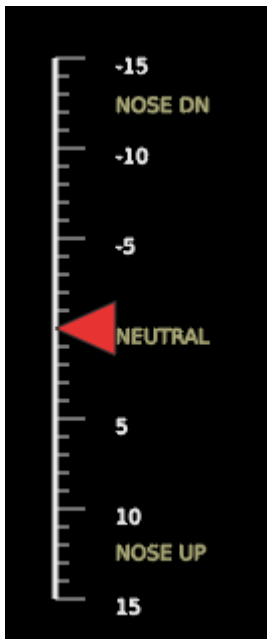
Einstellbarkeit: Helligkeit

1.1.34 SUCTION



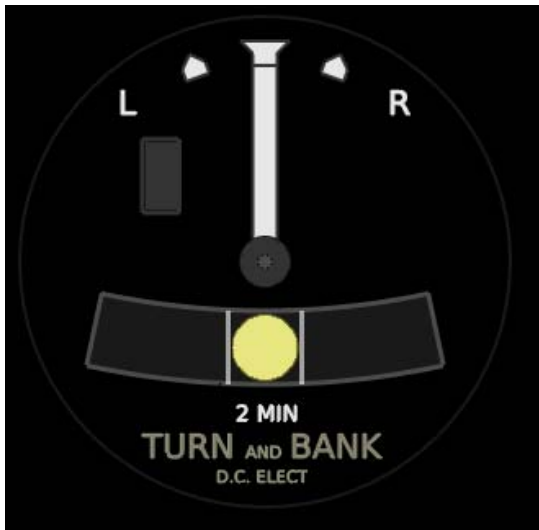
Name: SUCTION
 Beschreibung: vacuum suction
 Def. Size X: 100 pixel
 Def. Size Y: 100 pixel
 Einstellbarkeit: Helligkeit
 Flags: Source inoperative

1.1.35 TRIMTAB



Name: TRIMTAB
 Beschreibung: elevator trim tab
 Def. Size X: 50 pixel
 Def. Size Y: 100 pixel
 Einstellbarkeit: Helligkeit
 Flags: Electric InOP

1.1.36 TURN



Name: TURN

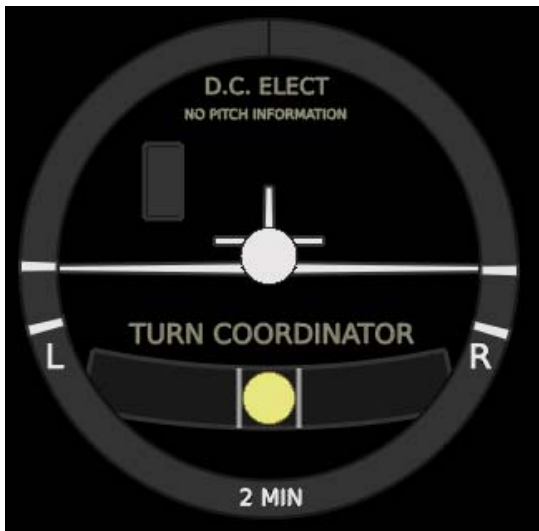
Beschreibung: turn coordinator (needle)

Def. Size X: 100 pixel

Def. Size Y: 100 pixel

Einstellbarkeit: Helligkeit

1.1.37 TURN 1



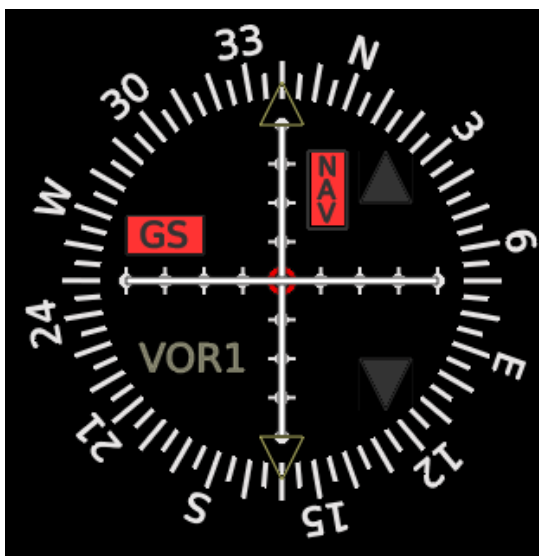
Name: TURN1
 Beschreibung: turn coordinator (airplane)

Def. Size X: 100 pixel
 Def. Size Y: 100 pixel

Einstellbarkeit: Helligkeit

Flags: Electric InOP

1.1.38 VOR 1



Name: VOR1
 Beschreibung: VOR1 gauge

Def. Size X: 100 pixel
 Def. Size Y: 100 pixel

Einstellbarkeit: OBS
 Helligkeit

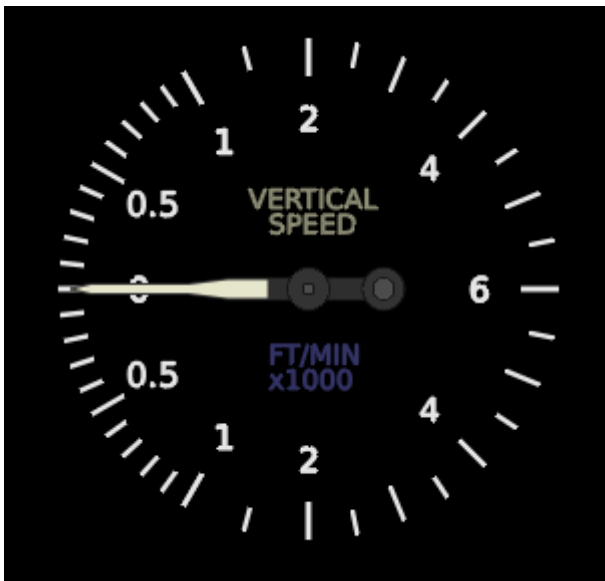
Flags: NAV
 GS

1.1.39 VOR 2



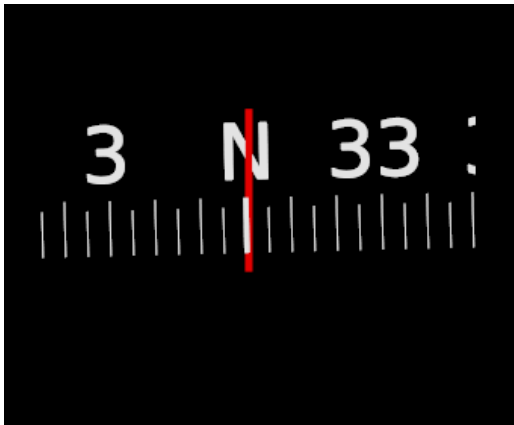
Name: VOR2
 Beschreibung: VOR2 gauge
 Def. Size X: 100 pixel
 Def. Size Y: 100 pixel
 Einstellbarkeit: OBS
 Helligkeit
 Flags: NAV
 GS

1.1.40 VSI 1



Name: VSI1
 Beschreibung: vertical speed
 Def. Size X: 100 pixel
 Def. Size Y: 100 pixel
 Einstellbarkeit: Helligkeit

1.1.41 Compass



Name: Compass
 Beschreibung: whiskey compass

Def. Size X: 100 pixel

Def. Size Y: 100 pixel

Einstellbarkeit: Helligkeit

1.1.42 FLAPS EXTEND INDICATOR



Name: Flaps
 Beschreibung: flaps extend indicator

Def. Size X: 100 pixel

Def. Size Y: 100 pixel

Einstellbarkeit: Helligkeit